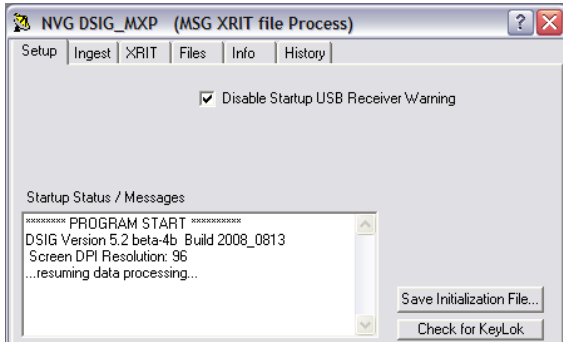


DSIG_MXP is a special version of DSIG to process the XRIT files captured by DSIG_MX. Run DSIG_MXP.EXE program. This usually done by double clicking on the DSIG_MX icon on the desktop. The DSIG_MXP start window will appear (as at left). Choose "Last Settings" if DSIG_MXP was running well the last time it was shut down. Choose "Other Settings" if this is the first time or if different settings are desired. Then choose an Initialization File from list. Choose "Start in Idle / Safe Mode" if previous startup resulted in a startup error. Change settings to match these pages then shut down DSIG_MXP and restart it.

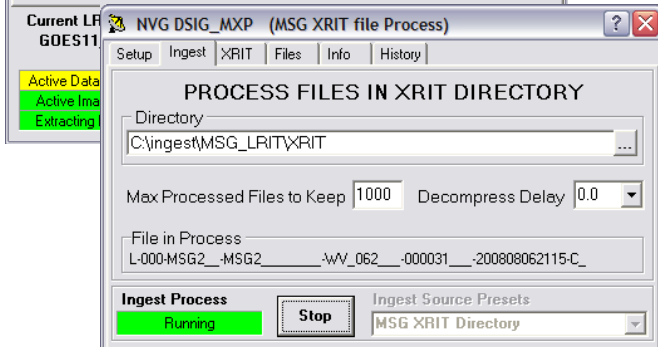
A DSIG_MXP control window appears. Below are 9 tabbed pages typical for MSG LRIT ingest



Setup Page

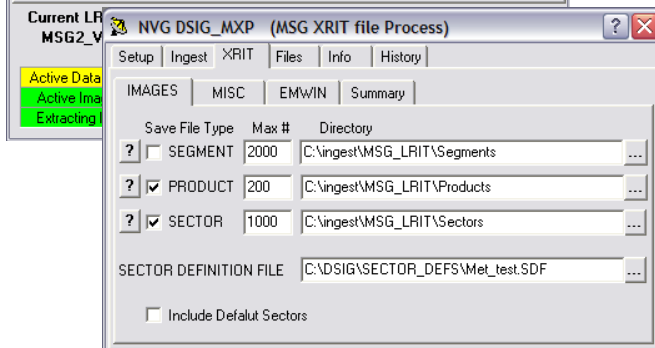
Not much to set here.

The startup status is displayed in the message box.



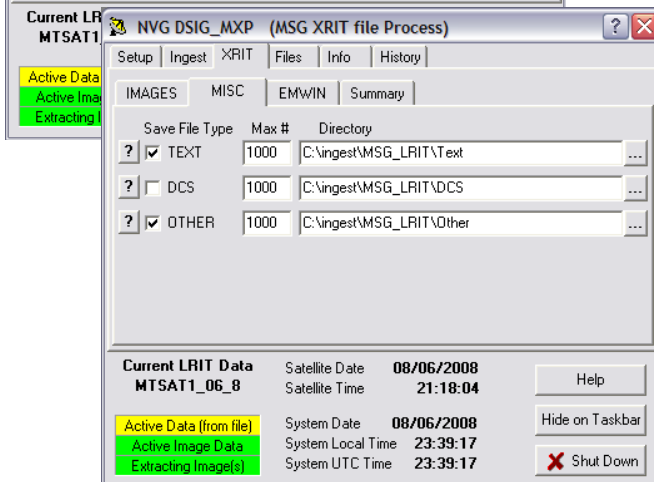
Ingest Page ***** NECESSARY SETTINGS *****

Verify or Set the Directory where the XRIT files are saved. As XRIT files are processed they are moved to a subdirectory of the above named \Processed
Set the maximum number of files for this directory before purging.
Leave the Decompression Delay at 0.0 unless problems are reported in the History Tab page message window.
 The name of the file being processed is shown.
 The Ingest Source cannot be changed from MSG XRIT Directory.
 This determines the type of processing to be done
 Click on the **Start/Stop Button** to start/stop processing.



XRIT Page > IMAGES SubPage ***** NECESSARY*****

Select via checkbox the types of files to save.
Set the Directory and Max to keep for each file type.
 Click the [?] Button for description of files.
Select Product Files and Sector Files for images viewable with the Megaview display program.
 Specify the **Sector Definition File**, created/edited in Megaview.



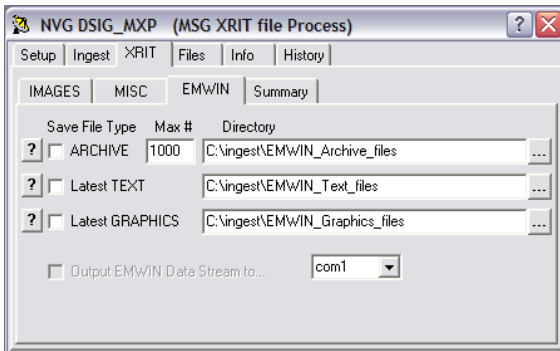
XRIT Page > MISC SubPage

Select the types of files to save (checkbox).
 Set the Directory and Max to keep for each file type.
 Click the [?] Button for description of files.

DSIG_MXP Typical Operation

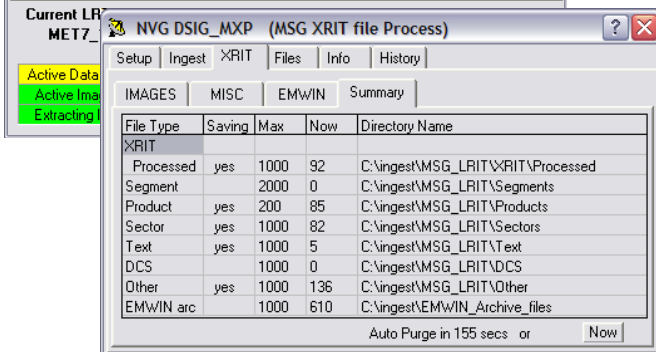
Ingest Data Type:
Source:

MSG LRIT (Part 2)
XRIT Files



XRIT Page > EMWIN SubPage

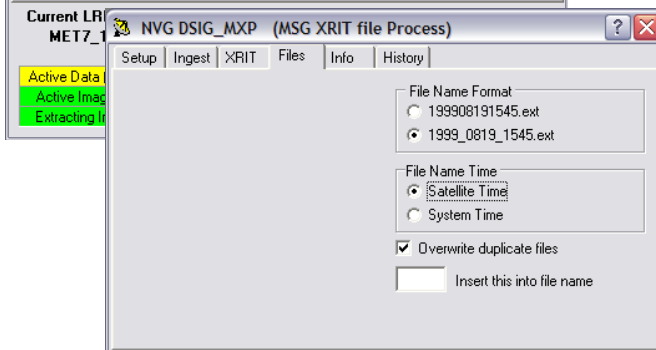
Do not worry about any of these settings for DSIG_MXP.
(EMWIN data is not available in the MSG LRIT data stream.)



XRIT Page > Summary SubPage

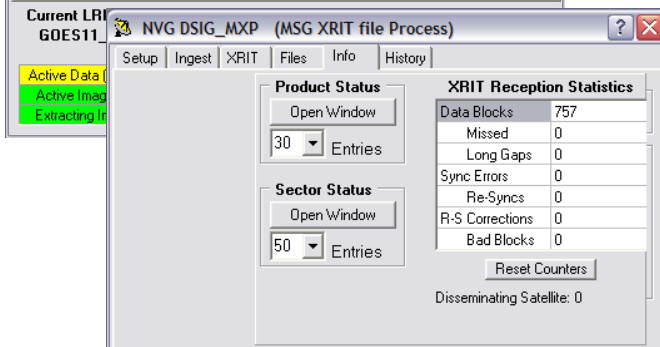
Shows status and settings for files being ingested.

Auto Purging occurs periodically. If you notice the number of files is greater than Max then you can purge manually by clicking on the Purge Now button.



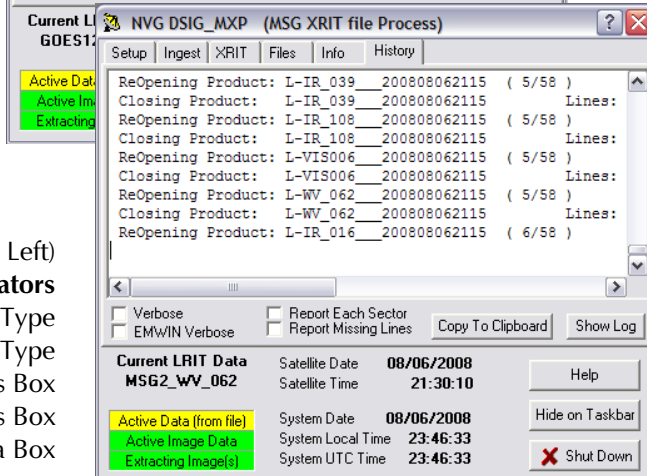
Files Page

Choose **File Name Format** as desired.
Choose **File Name Time** as desired.
Verify the **Overwrite Duplicate Files** checkbox is checked.
Leave **Insert Into File Name** box blank for now.
(Can be used to indicate that file should be post-processed.)



Info Page

If "Active Data" Status Box is green (when XRIT files are present to be processed), then:
Verify that Data Blocks value is increasing.
Other numbers will be low or zero.
Click on **Open Window** to display windows showing the status of image product and image sector ingest.



History Page

Verify that each scan is being reported.
Type of scan and time of start should be reported.

Verify that Satellite Date and Time are updating (true only if "Active Data" status box is green).

Always in View (Lower Left)
Status Indicators
Satellite Type
Scan Type
Active Data Status Box
Active Image Data Status Box
Extracting Image Data Box