

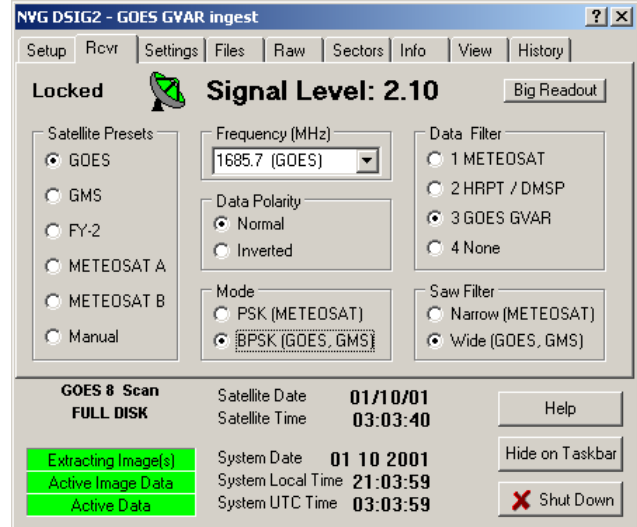
# Digital Satellite Image Ingest Software

DSIG.EXE is a 32 bit Windows application for computers running Windows NT 4.0 or Windows 2000. It provides flexible digital data acquisition from weather satellites.

It has support for **GOES GVAR & LRIT, GMS & FY2 VISSR, and METEOSAT PDUS** (with decryption).

It has support for **multiple hardware types** (different receivers, different bitsync / fifo boards). Multiple copies of DSIG.EXE can run simultaneously on one computer.

The **Program Control Window** (shown at right) displays satellite type, scan type, data/acquisition status, satellite date/time, system date/time, a Help button, plus tabbed pages described below:



## Setup Page

Set hardware type, choose software settings to match hardware settings for IRQ, address, etc,

## Receiver Page (controls and status)

Choose satellite Presets or Manual control of frequency, mode, filters, downconverter power, etc.

Observe RF Lock indicator, Signal Strength readout

## Settings Page

Choose data input to be:

- Live Data from GOES, GMS or METEOSAT, or,
- Raw Data file from hard drive or CD for testing

Set automatic de-speckling for noisy signals

## Files page

Choose File Purging method - choice of two

Choose File Name style - choice of two

## Raw Page

Set Raw Data Controls - manual or automatic start

Choose Raw Data Output to be:

- Raw data bit stream to file, or
- Raw data blocks formatted to file, plus
- Full scan TIFF image files for each image channel

(Can ingest Raw, TIFFs and Sectors simultaneously)

## Sectors Page (status of user-defined sector image files)

Define any number easily with MEGAVIEW 97

Sector definition attributes include the following:

- Image file format
  - File name extension and directory
  - Satellite scan type to extract from
  - Geographic area
  - Image size
  - Pixel resolution (km/pix), even fractional values
  - Channel to extract from
  - Selectable night exclusion for visible images
- (Can ingest Raw, TIFFs and Sectors simultaneously)

## Info Page (information and status)

- Error statistics and Bit Error Rate (BER)
- Data block status
- Scan latitude readout
- Misc data from block headers

## View Page

Live Preview of incoming IR image at 40 km/pix

## History Page

- Log of time, scan type, current bit error rate
- Choice of verbose log to help trouble-shooting